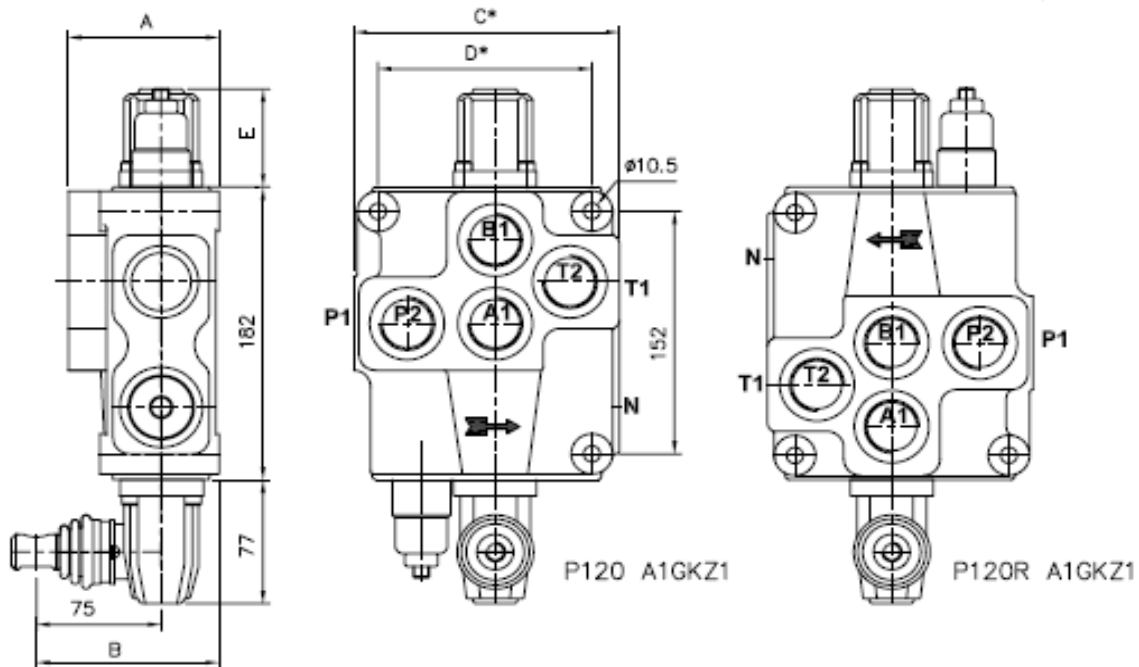


Bulmach Sp. z o.o.
 Ul. Cypryjska 20
 02-761 Warszawa
www.bulmach.pl
poczta@bulmach.pl
 tel. +48 22 840 65 68
 fax. +48 22 433 53 53 kom.
 +48 605 665 475

Rozdzielacz Hydrauliczny P 120

Schemat



* for each next spool + 53 mm

Table 1

	A	B	C	D	P1	P2	T1	T2
P120	82	110	160	129	+	+	+	+

Table 2

spool control фиксация золотника	E
1; 2; 3; 4; 5; 6; 7; 8; 9; 10; 11;	64
12	74

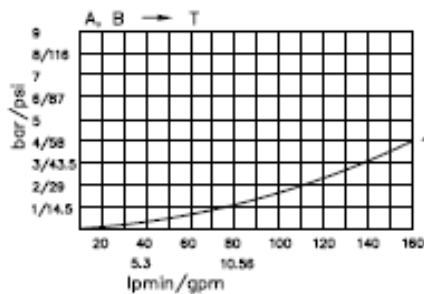
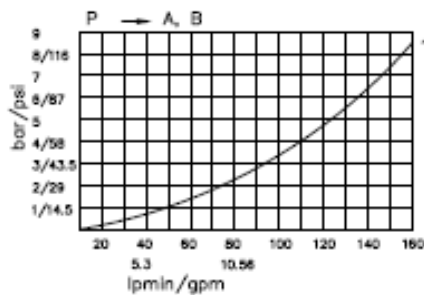
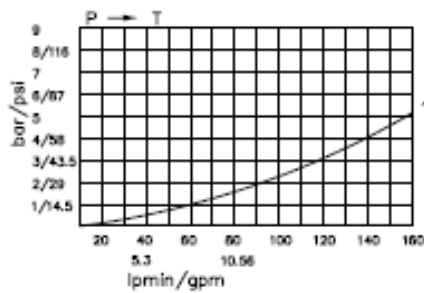
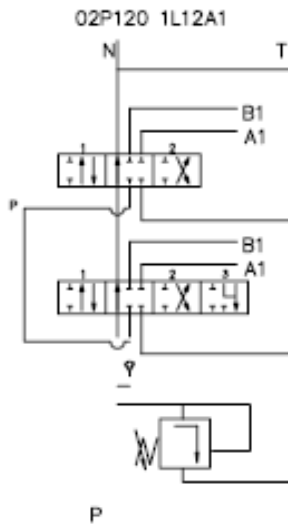
number of spools	02
hydraulic directional control valve P120	P120
parallel distribution (parallel)	1
spool type—distribution	A
spool control (table 2)	1
second spool distribution (table 1)	L
second spool control (table 2)	12
ports threads (table 5)	G
lever options (table 6)	KZ1
operation features (table 4)	H
electric microswitch (table 3)	E
carry over center (table 7)	C2
connection ports in use (table 8)	-11

Bulmach Sp. z o.o.
 Ul. Cypryjska 20
 02-761 Warszawa
www.bulmach.pl
poczta@bulmach.pl
 tel. +48 22 840 65 68
 fax. +48 22 433 53 53 kom.
 +48 605 665 475

Rozdzielacz Hydrauliczny P 120



Tablice kodowania



code	Number of spools	code	way of distribution ; распределение потока
P	1	1	parallel ; параллельное
02, 2	2	(2)	(tandem(series parallel) ; серийно-параллельное)
03, 3	3		

ets.

Table 5

code	spool type
A	
B	
C	
D	
E	
F	
G	
H	
M	
N	
O	
P	
Q	
R	
S	
T	
L	

Table 6

code	spool control
1	
2	
3	
4	
5	
6	
7	
8	
9	
10	
11	
12	
13	

Table 7

code	с микро шалпер ; incorporated microswitch
E	 mikroswitch type Omron-V 165 I C5

Table 8

code	грубое управление ; operation feature
P	 пневматическое on-off pneumatic control ; 5-10 bar ; ports G1/4
H	 гидравлическое on-off hydraulic control ; pn = 5 - 20 bar ; ports G1/4

Bulmach Sp. z o.o.
 Ul. Cypryjska 20
 02-761 Warszawa
www.bulmach.pl
poczta@bulmach.pl
 tel. +48 22 840 65 68
 fax. +48 22 433 53 53 kom.
 +48 605 665 475

Rozdzielacz Hydrauliczny P 120

Tablice kodowania



treads for conection

Table 9

outlets/ports/	metric	BSP	SAE	NPT
P, A, B, T	M33x2	G 1"	SAE 16	1 - 11.5
N	M36x1.5	-	-	-

Table 10

code	with thread M12	code	with cange $\phi 12$	code	with cange $\phi 12$
KZ		KY		KI	
KZ1		KY1		KI1	
KZ0		KY0		KI0	
KZ01		KY01		KI01	

Table 11

code	metric
X	without N
-	with N, but closed
C	with N, closed center
C1	with N - carry over for ermeto
C2	with N - carry over, internal thread

Table 12

code	parts for connection in uze
11	P1 ; T1
12	P1 ; T2
21	P2 ; T1
21	P2 ; T1

